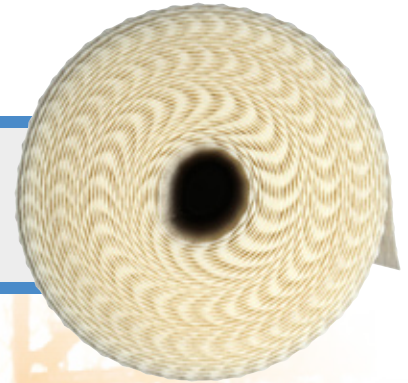




## Sovereign SovDrain CDM8

Sovereign SovDrain CDM 8 is a high performance cavity drainage system membrane.



### Product Code

2 m x 20 m: **30806088**

2.4 m x 20 m: **30806090**

### Description

It provides a robust drainage membrane suitable for use above and below ground on walls, floors and arched/vaulted ceilings, as part of the SovDrain waterproofing system.

SovDrain CDM 8 is strong but pliable and is simple to form around corners. It is easily cut to shape/size using a knife or scissors.

This system is typically finished by dry lining using plasterboards onto battens fixed directly into the SovDrain Membrane fixing plugs, or alternatively onto an independent framework.

### Technical Data

Roll Size: 2 m x 20 m  
2.4 m x 20 m

Stud height: 8 mm

Membrane thickness: 0.55 mm

Material: HDPE (high density Polyethylene)

Colour: Translucent

Compressive Strength: > 100 kN/m<sup>2</sup>

Drainage capacity: 4 litres/sec/m

Air gap volume: 5 litres/m<sup>2</sup>

### Environmental Resistance

Highly resistant to degradation by all common chemicals. It is resistant to biological attack and does not sustain microbial development. It is compatible with drinking water.

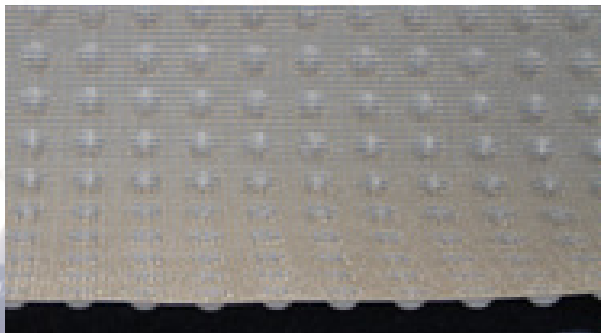
### Penetration Resistance

Resistant to root penetration

### Fire Resistance

B2 classification in accordance with DIN 4102





## GENERAL USES

- ✓ Above ground damp proofing
- ✓ Below ground waterproofing in areas such as;
  - > Cellars
  - > Basements
  - > Vaults
  - > Tunnels
- ✓ Providing a fast track membrane on floors to allow quick laying of covering/finished surface.

## ANCILLARY PRODUCTS

- ✓ SovDrain Membrane Lath Plug – for fixing
- ✓ SovDrain Sealing Rope – for plug fixing seal and joint sealing
- ✓ SovDrain Sealing Tape – for joint sealing
- ✓ SovDrain Corner Strip – for floor/wall juncture sealing
- ✓ SovDrain Channel & Accessories – for drainage facility
- ✓ SovDrain Pump & Sump Stations – for water control, collection and discharge

## COVERAGE

2 m x 20 m	38.6 m <sup>2</sup>
2.4 m x 20 m	46.6 m <sup>2</sup>

## HEALTH & SAFETY

This product is classified as non hazardous.



Health & safety information  
available on request



### Important Disclaimer

The information given is in good faith based on experience and usage, however all recommendations are made without warranty or guarantee, since the conditions of use are beyond our control. All goods are sold in accordance with our Conditions of Sale, copies of which are available on request. Customers are advised that product, techniques and codes of practice are under constant review and changes occur without notice. Please ensure you have the latest updated information.



# Sovereign

the gold standard in building products

Sovereign Support: 01229 870800 | [www.sovchem.co.uk](http://www.sovchem.co.uk)

FIND US HERE

